

# Copihue



# Specifications

## General Information

Design	Hoek Design Naval Architects, Edam
Builder	Claassen Jachtbouw BV, Zaandam
Year	1997
Refit	Balk Shipyards, Urk (2016/2018/2020)
Price	€ 1.750.000
VAT	not Paid
LOA	22.80 m
LWL	16.22 m
Beam	5.40 m
Draft	3.00 m
Displacement	44.50 ton
Mast height	30.00 m approx., keel stepped
Fuel	2000 litres
Daytank fuel	90 litres
Water	900 litres
Painting	Awlgrip
Flag	Southampton, UK
Registration no.	726749
Berths/cabins	7 / 4

## Certification/Classification

MCA Category 60 miles offshore YDSA

## Construction

Hull material	Aluminium
Hull antifouling	Trilux 33
Keel	Aluminium fin
Ballast	Cast lead
Rudder	Aluminium skeg hung Replace rudder bearings (top and bottom)
Decks	New teak deck and caprail

## Mechanical

Engine	Perkins 225TI, 6-cylinder,
Propeller	Hundested VP4 FR EL with VP5 4 blade
Generator	Northern Lights M844W3
Watermaker	Dessalator DES RS 1
Hydraulics	Enerpack powerpack

## Batteries

Service Batteries	Gel 12 x 600 A/h
Power Batteries	Gel 12 x 400 A/h

## Sails

Mainsail	105 m2, North Sails
Yankee	115 m2, North Sails
Staysail	45 m2, North Sails
MPS	290 m2, North Sails
Spinnaker	330 m2, North Sails

## Rig and Deck Hardware

Mast, boom, spi pole	Rondal, aluminium, Painted
Standing rigging	Riggarna s/s Rod
Running rigging	Dyneema
Winches	Lewmar
Powered	Lewmar type: 66ST x3, 77ST x2
Manual	Lewmar type: 66ST x2 48ST x1
Deck fittings	Rondal
Furlers	Rondal
Anchor	Stainless Steel plough, 75 kg.
Anchor winch	Lewmar 3500, hydraulic
Hand hydraulics	Navtec boom vang, outhaul, backstay
Mast jack	2017 Serviced

## Interior

Panelling	Teak raised and fielded panels, egg gloss varnish. Ceiling Oregon pine, tongue and groove, white tinted varnish
Insulation	6 cm PU foam Interior on rubber mounts

These specs can not be guaranteed as they are accepted without full verification.

# Specifications

## Domestic

Oven / Induction hob	Miele Combi
Fridge	Bespoke
Freezer	Bespoke
Hot tap	Quooker
Galley Tops	Granite
Heads	Blakes x1, Raritan Atlantis Freedom x1
Top Head	Marble

\*The yachts domestic inventory is not included.

## Communication

SAT C	Sailor 6006
VHF	Sailor VHF RT2047-D
	Sailor Handheld
	ICOM Handheld 2
Satcom	Sailor 250 Fleet Broadband

## Navigation

Radar	Raytheon 48 mile range ARPA equipped radar
AIS	Comar CSB200 Class B
Magnetic Compass	Sestrel
Echo sounder	B&G H3000
Plotter	Transas Nav Sailor 4000
GPSL	Simrad MX510 Navigational System
Laptop computer	MacBook for boat management, administration and logistics
Fax/printer/copier	HP Envy 120
Clocks	2
Barometers	2
Barograph	1

## Sailing Electronics

Sailing instruments	B&G
Autopilot	B&G, custom drive

## Audio /Video

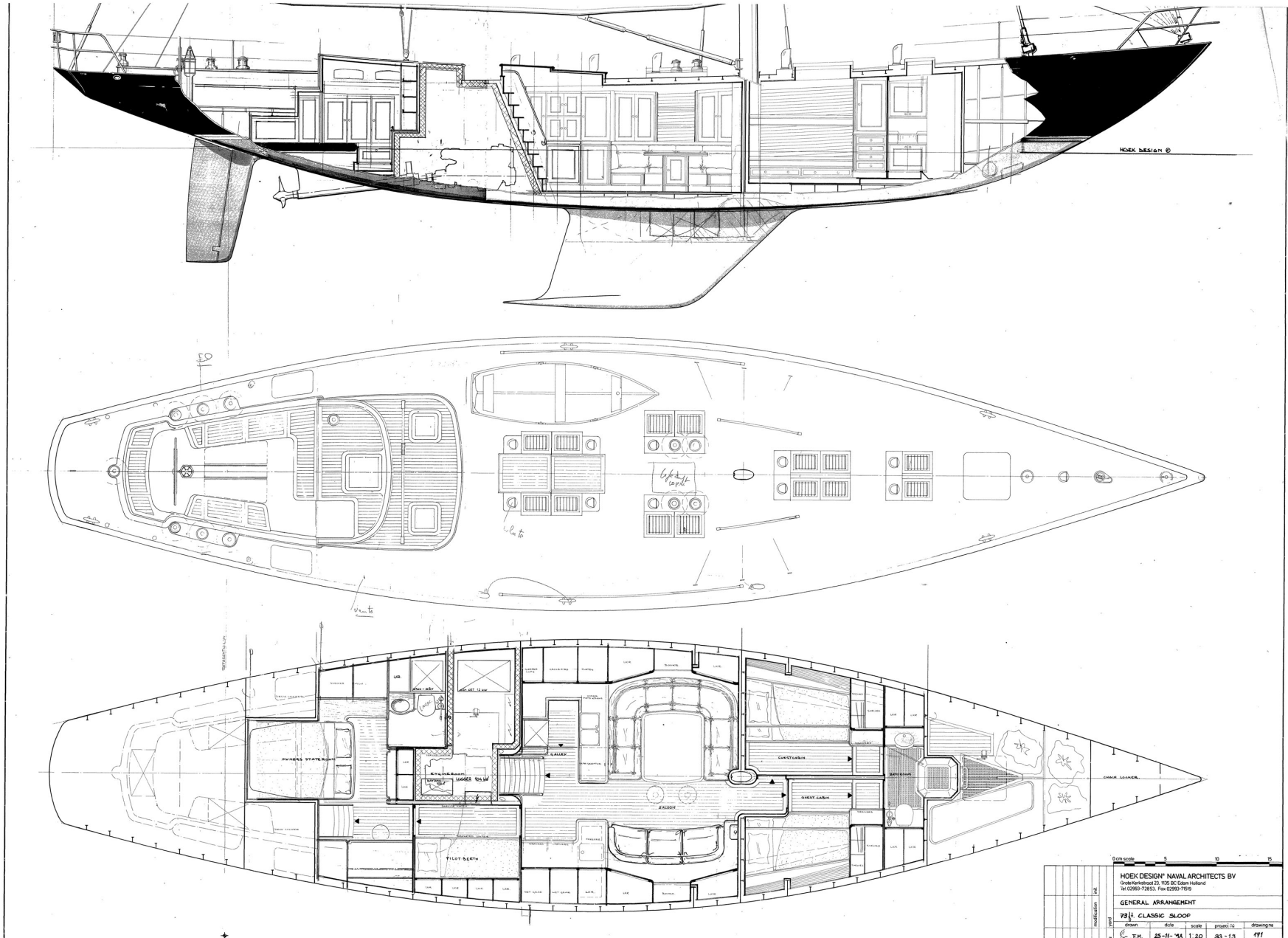
CD/cassette/radio set	Marantz AV receiver 4 Bower & Wilkinson speakers in salon, 2 x 40 W waterproof speakers in cockpit
Flat screen TV and DVD	Sony integrated into Marantz system
TV aerial on mast head	

## Life Saving Equipment

Life raft:	Avon 8 man Offshore x2
EPIRB:	Thrane 406

## Inventory

Cockpit awning	Antigua Sails
3/4 deck awning	Antigua Sails
Skylight covers	Sander Sails
Passarelle	Carbon



0cm scale		5	10	15
HOEK DESIGN <sup>®</sup> NAVAL ARCHITECTS BV Lindendreef 10, 1105 GS, Oude Meerland Tel: 02993-73953, Fax: 02993-7019				
GENERAL ARRANGEMENT				
73' CLASSIC SLOOP				
drawn	date	scale	project no.	drawing no.
T.M.	25-11-20	1:20	83-13	771





















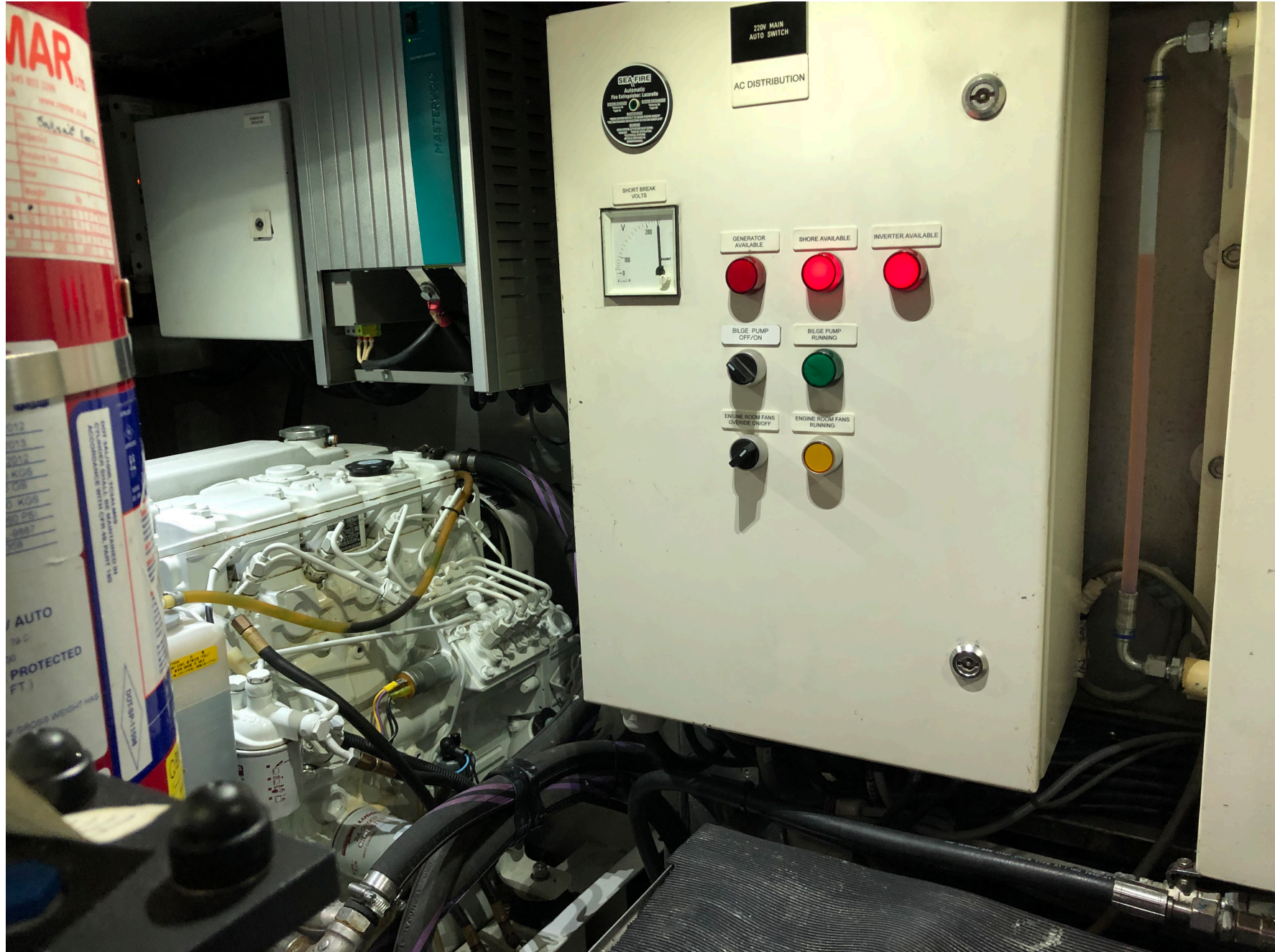












Hoek Yachts Brokerage  
and Charter BV

Grote Kerkstraat 23  
1135 BC Edam  
The Netherlands

Telephone: +31 (0) 299 372853  
info@hoekbrokerage.com  
www.hoekbrokerage.com

